

Port of Nagoya Public Aquarium Tsunami Evacuation Guidance Manual

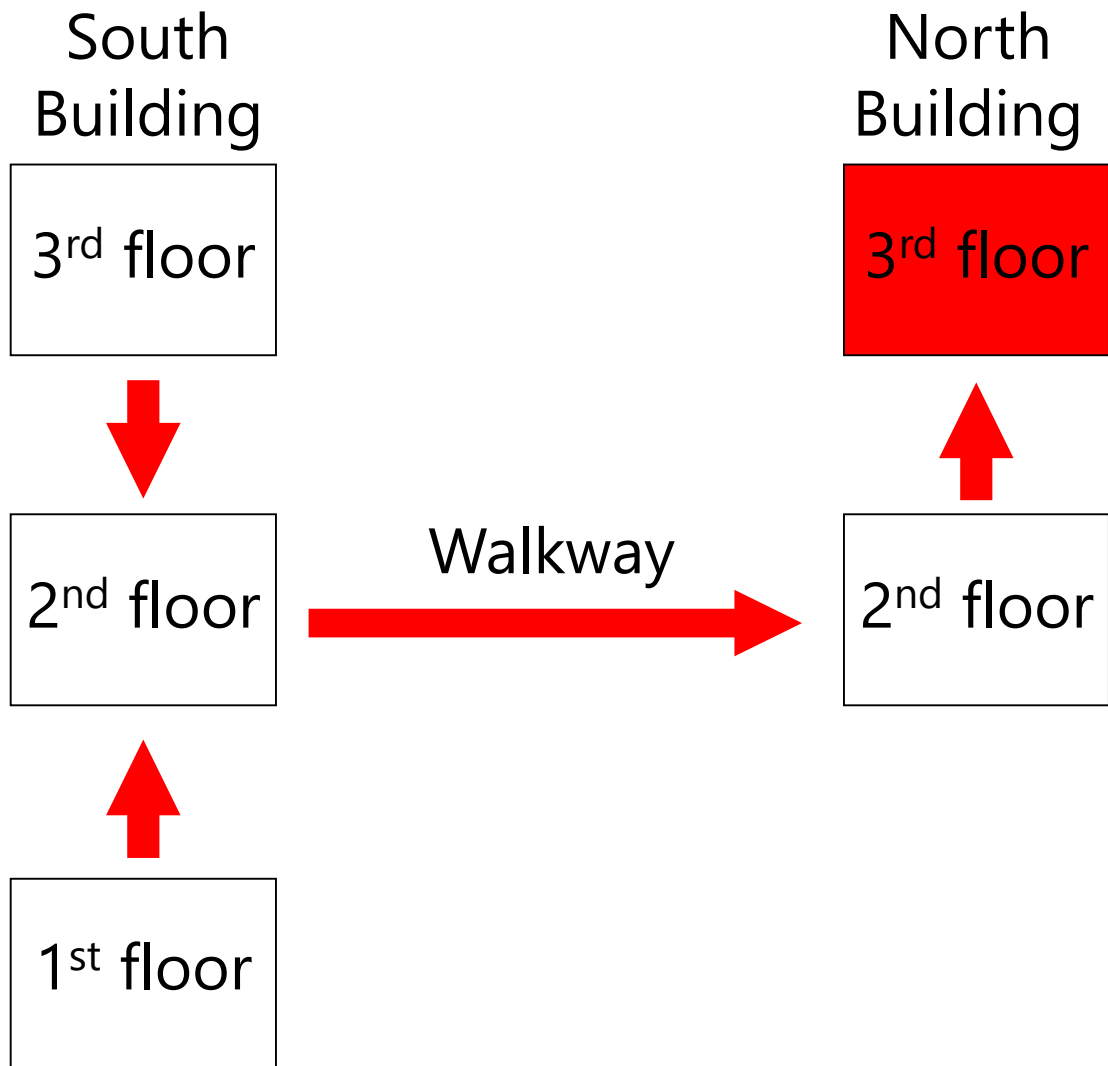
(1st March, 2018)

When the emergency of
Tsunami or Earthquake occur,
please evacuate to the 3rd floor
of the North Building.

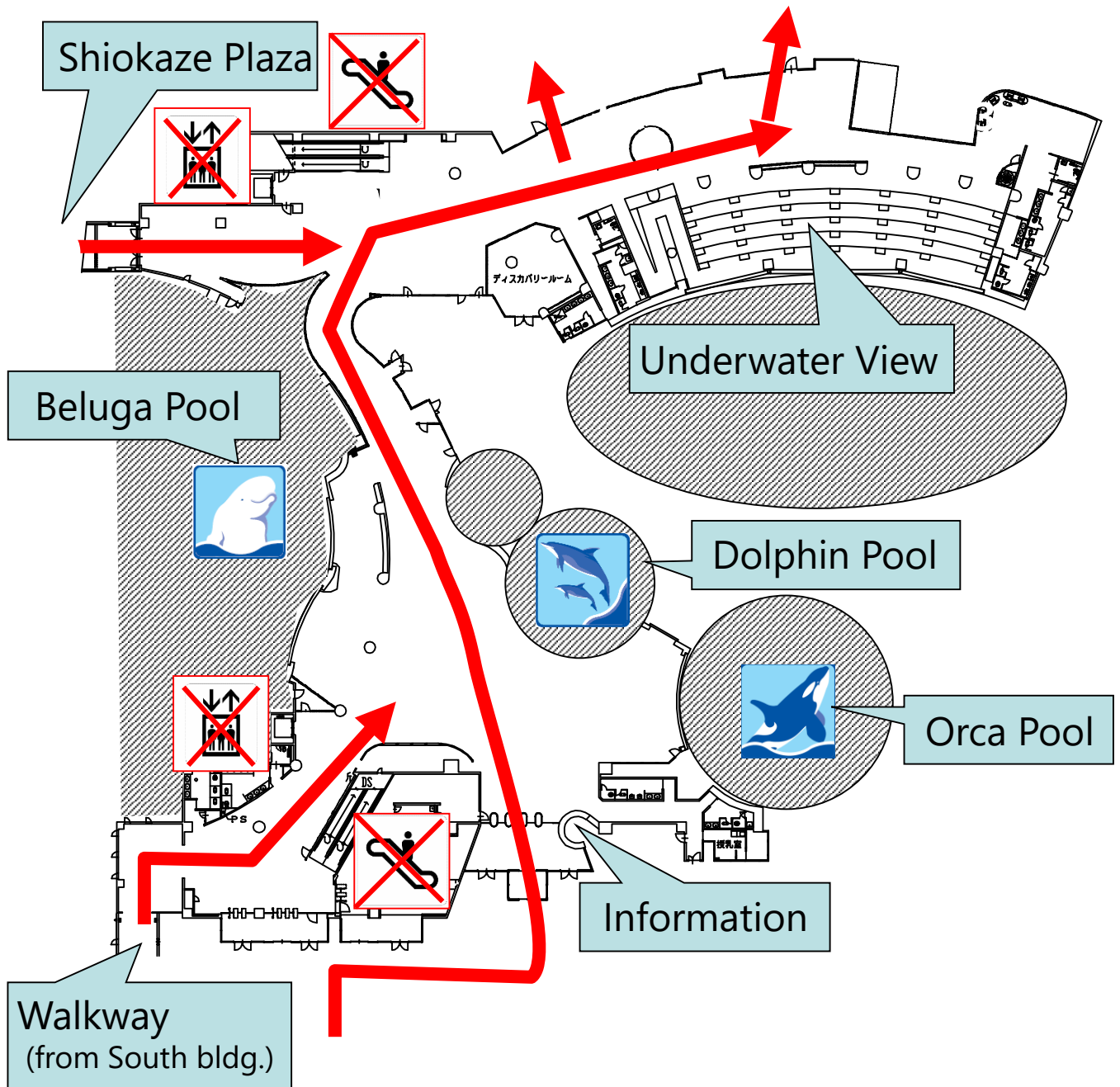
Do not use the elevator
or escalator for evacuation.



Evacuate to **the Stadium on the 3rd floor of the North Building** and wait until the surrounding safety is confirmed.

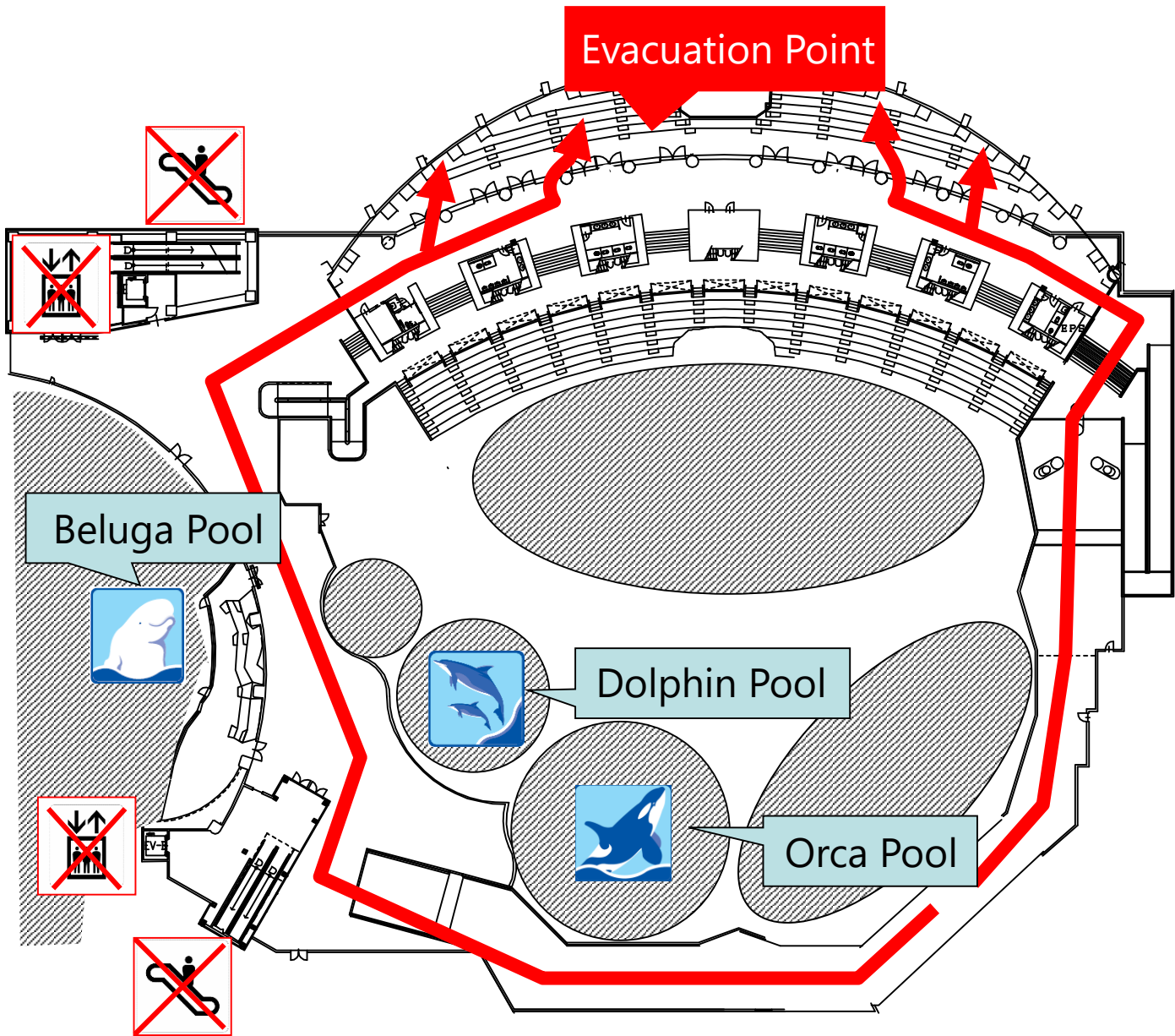


2nd floor of the North Building



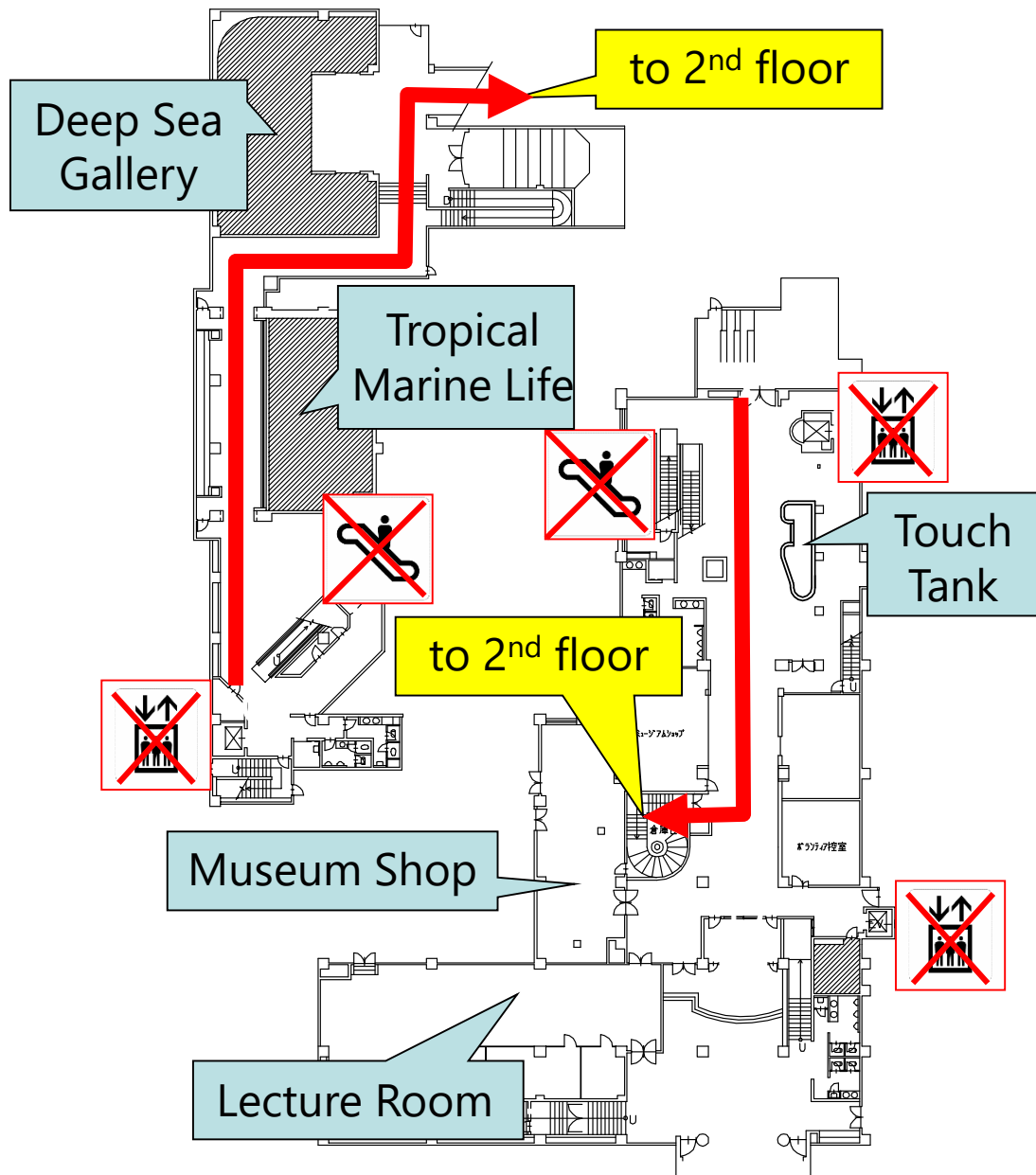
Evacuate to the 3rd floor.

3rd floor of the North Building



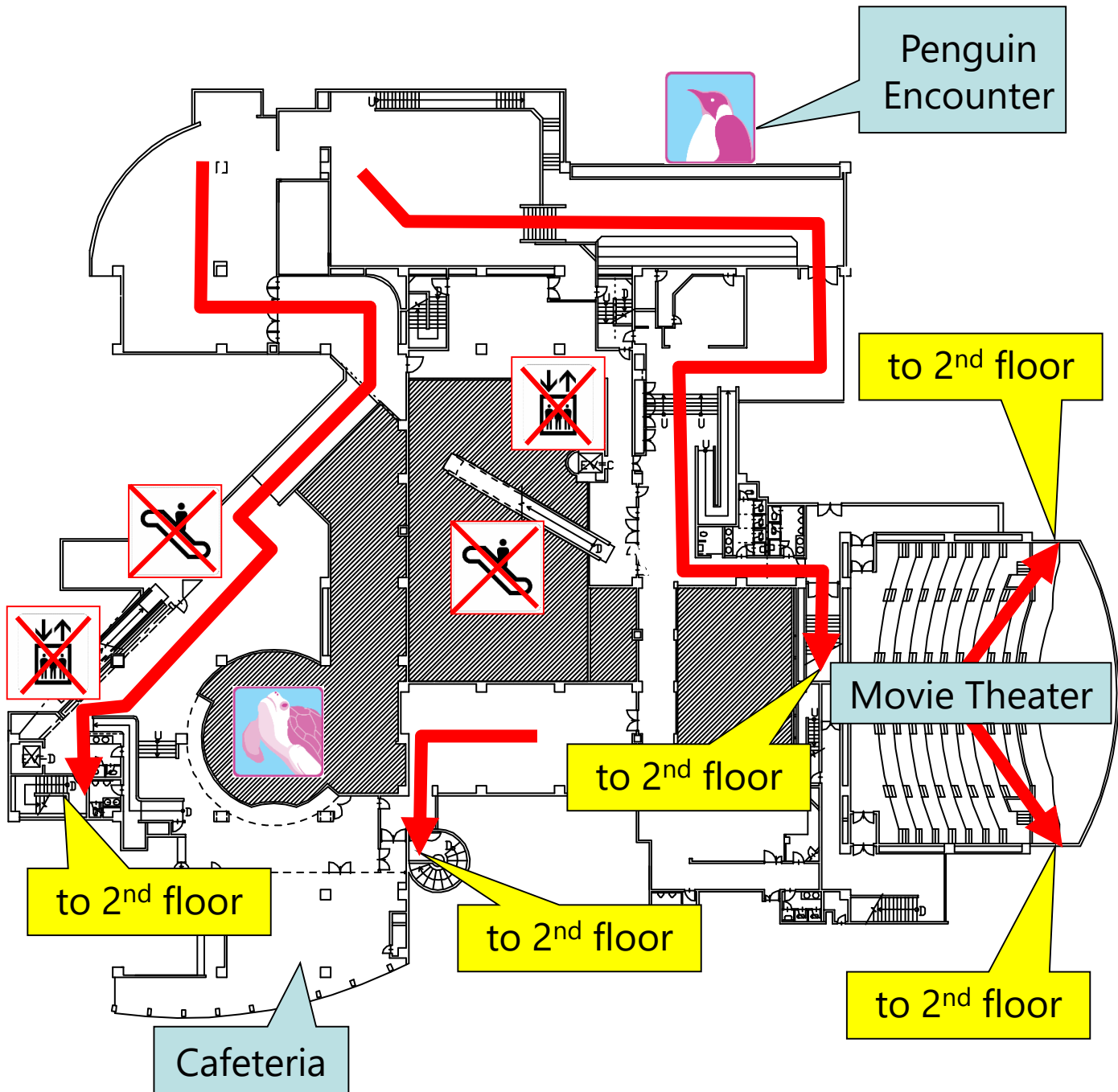
Please wait at the Stadium until the surrounding safety is confirmed.

1st floor of the South Building



Go up to the 2nd floor, then head to the North Building through the walkway.

3rd floor of the South Building



Go down to the 2nd floor, then head to the North Building through the walkway.